

BUILDINGENERGY BOSTON

- KEYNOTE PRESENTATION -

FROM SILOS TO SYNERGY: TOWARD INCLUSION AND THRIVING COMMUNITIES



Laura Bailey,
Vermont Council on Rural Development



Heather Ferrell,
Prism Design Lab

From Silos to Synergy:

Toward Inclusion and Thriving Communities

Laura Cavin Bailey, RA, SEED,
Climate Economy Program Manager,
Vermont Council on Rural Development
laura@vtrural.org

Heather Ferrell, AIA, NOMA, SEED
Founder and Executive Director,
Prism Design Lab
heather@prismdesignlab.org

NESEA Building Energy 2025 "Build the Movement" March 21st, 2025



Photo by University of Vermont's Spatial Analysis Lab



NESEA's Vision:

We envision a vibrant and resilient built environment that supports climate justice and equity.

What does **climate justice**
and **equity** look like to you?

Anti-Racism





High Performance, Low Carbon Envelopes

A man wearing a green cap and a dark blue hoodie stands next to a young child in a green shirt. They are positioned next to a white outdoor air conditioning unit mounted on the side of a house with vertical wood siding. The man is pointing towards the unit. The scene is set outdoors with a blue sky and some greenery in the foreground.

Beneficial Electrification

Photo © Efficiency Vermont



Regenerative Economics

Climate Workforce Training



A close-up photograph of a globe of the Earth, showing the Americas and parts of Europe and Africa. The globe is being held gently by several hands of various skin tones, including light, medium, and dark. The hands are positioned around the globe, with fingers resting on its surface, symbolizing global unity, care, and collective responsibility. The background is softly blurred, showing more hands and people, suggesting a large group of people participating in this gesture.

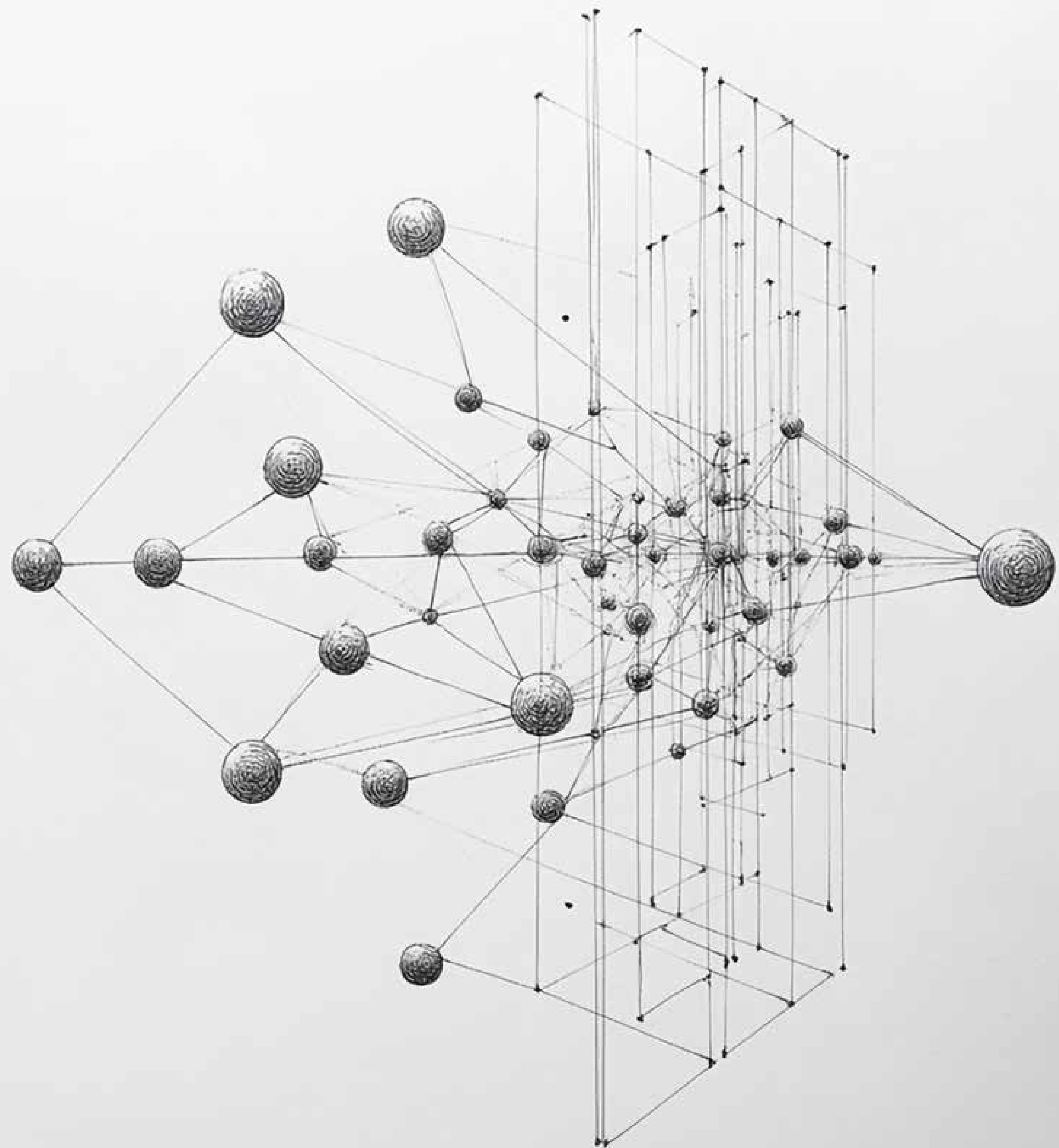
Collective Action

How do we *Build the Movement*?





Atacama Desert, Chile



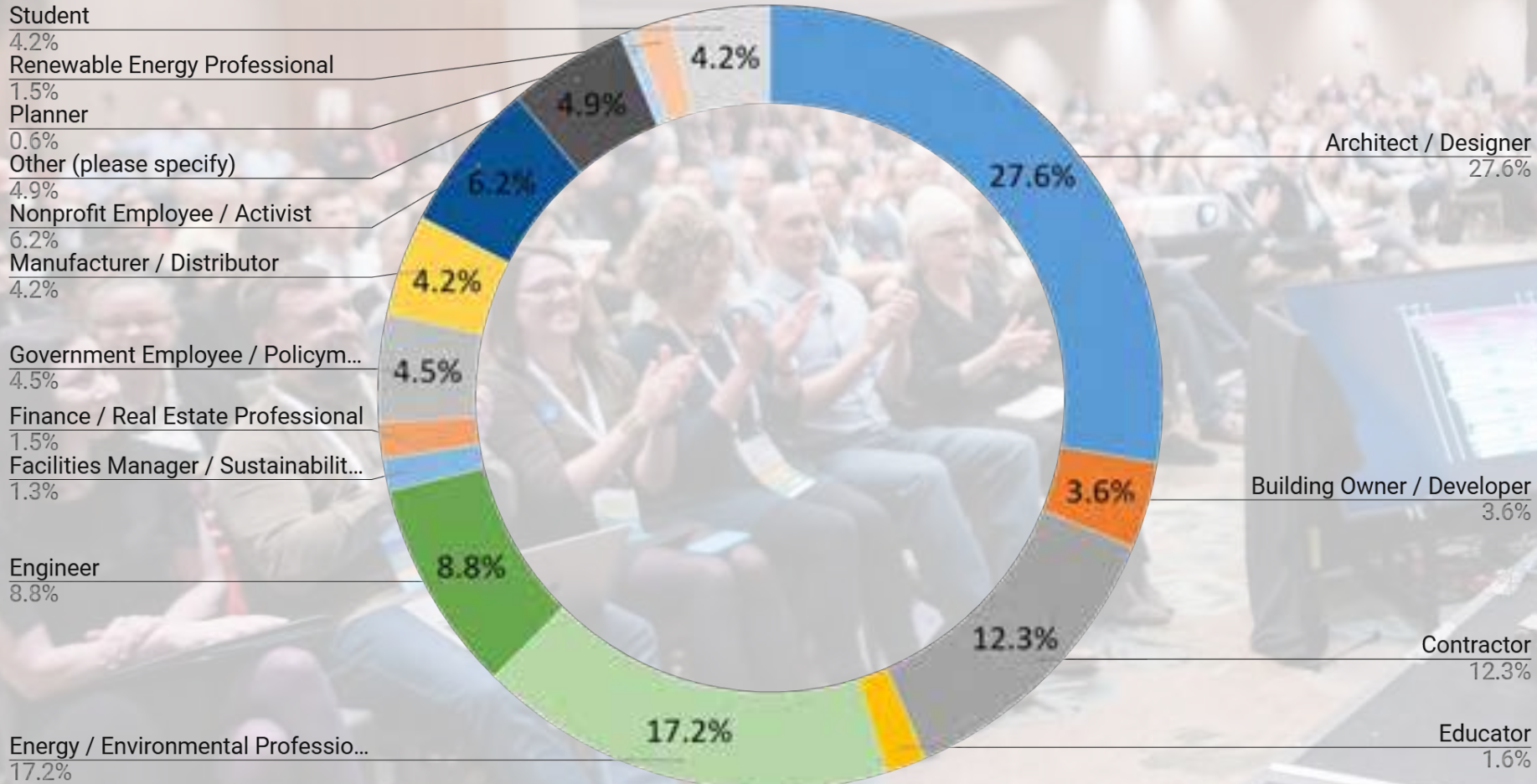
We need more people to value the work we do.
More people to learn from the work we do.
More people to advocate for the work we do.

- Bryan Bell, Design Corps



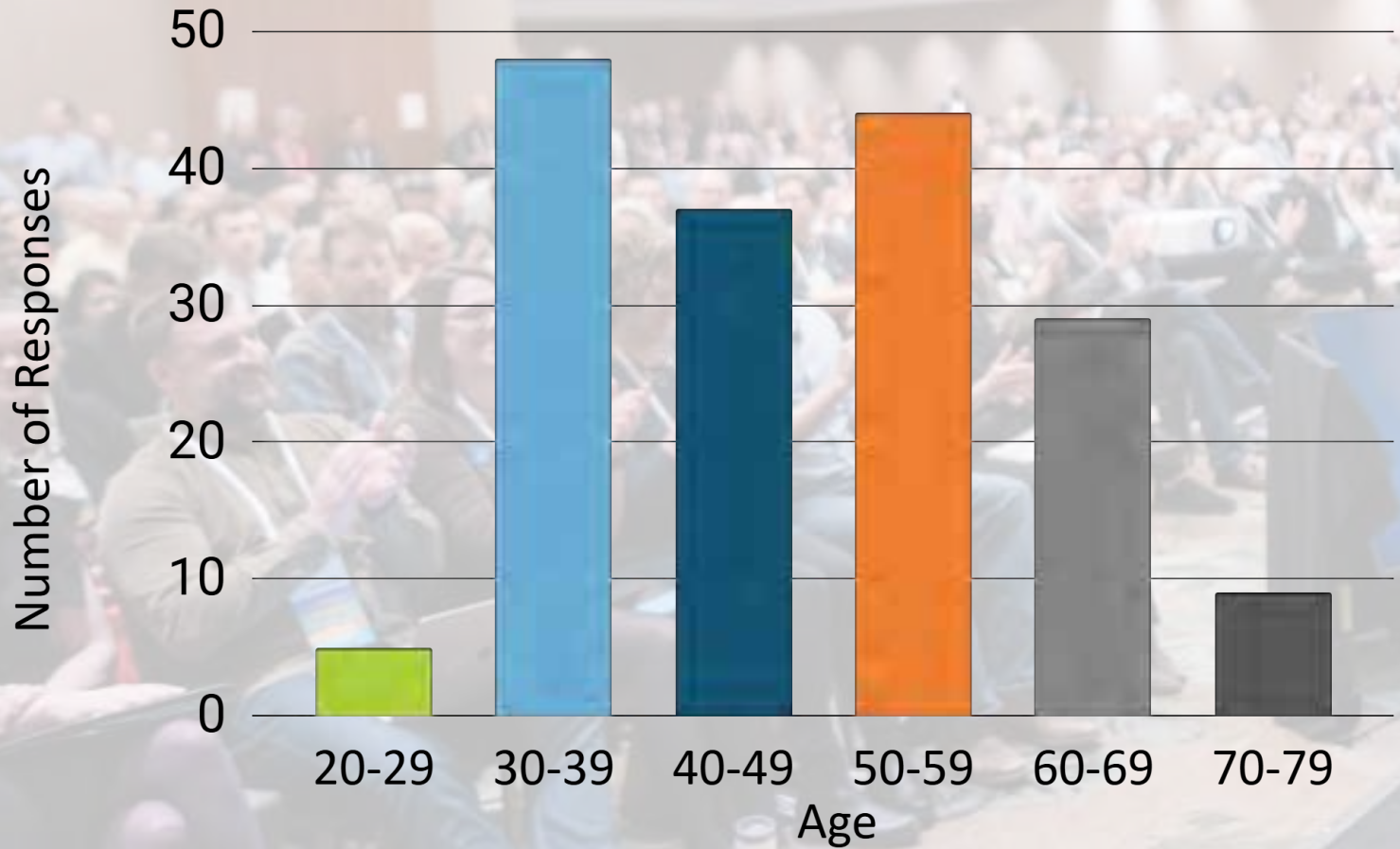


Who is here today?



(Total Number of Responses: 673)

53% response rate



(Total Number of Responses: 173)

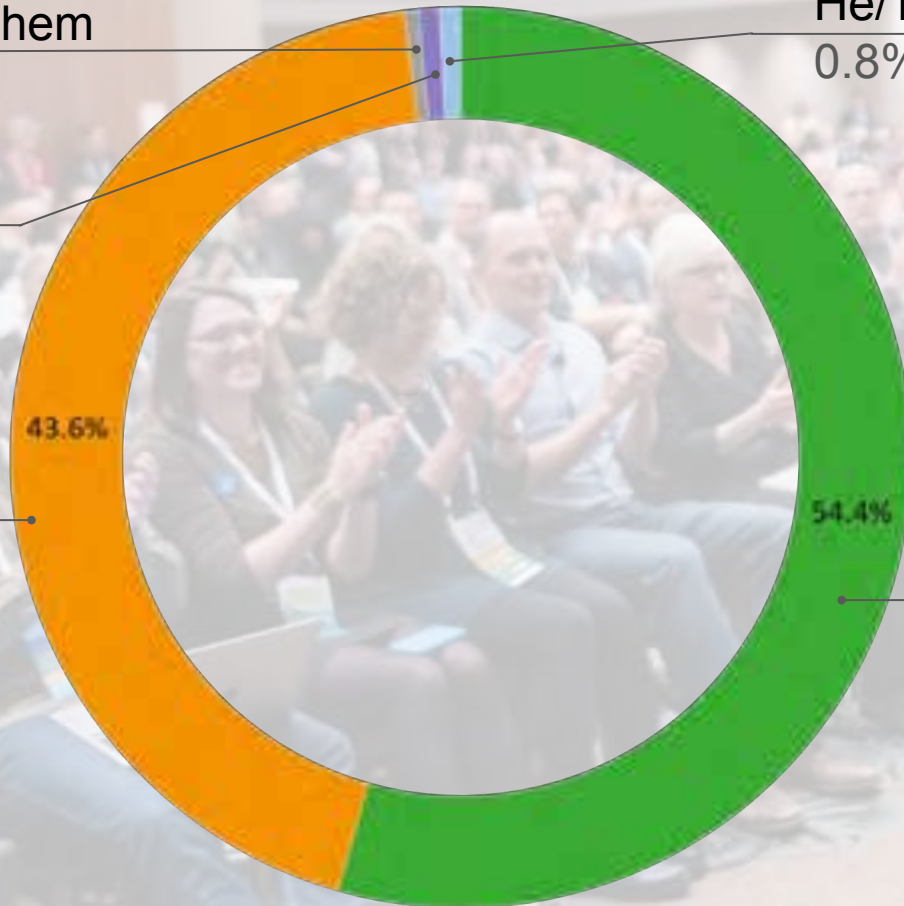
14% response rate

They/Them
0.5%

He/They
0.8%

She/They
0.8%

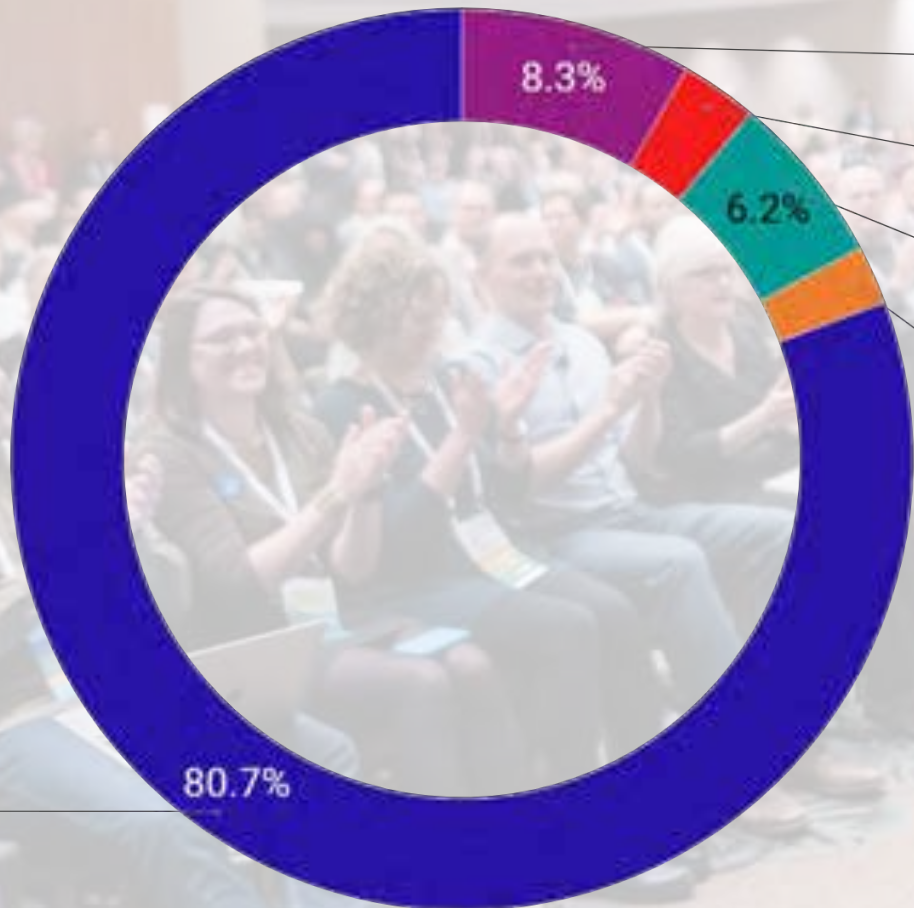
She/Her
44.3%



He/Him
53.4%

(Total Number of Responses: 796)

62% response rate



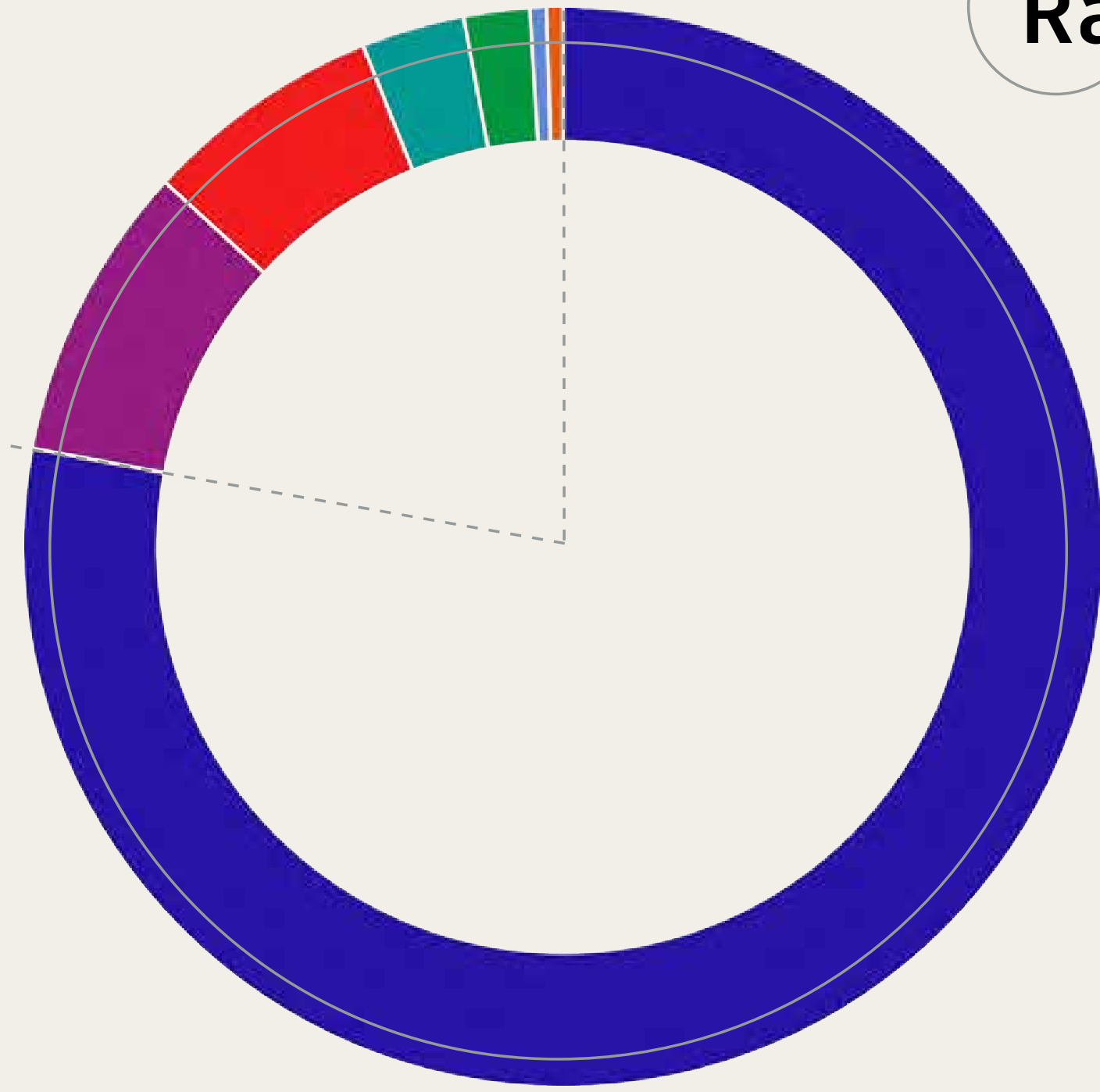
Asian
8.3%
Black
2.8%
Hispanic/Latinx
6.2%
Multiracial
2.1%

White
80.7%

80.7%

(Total Number of Responses: 584) **46%** response rate

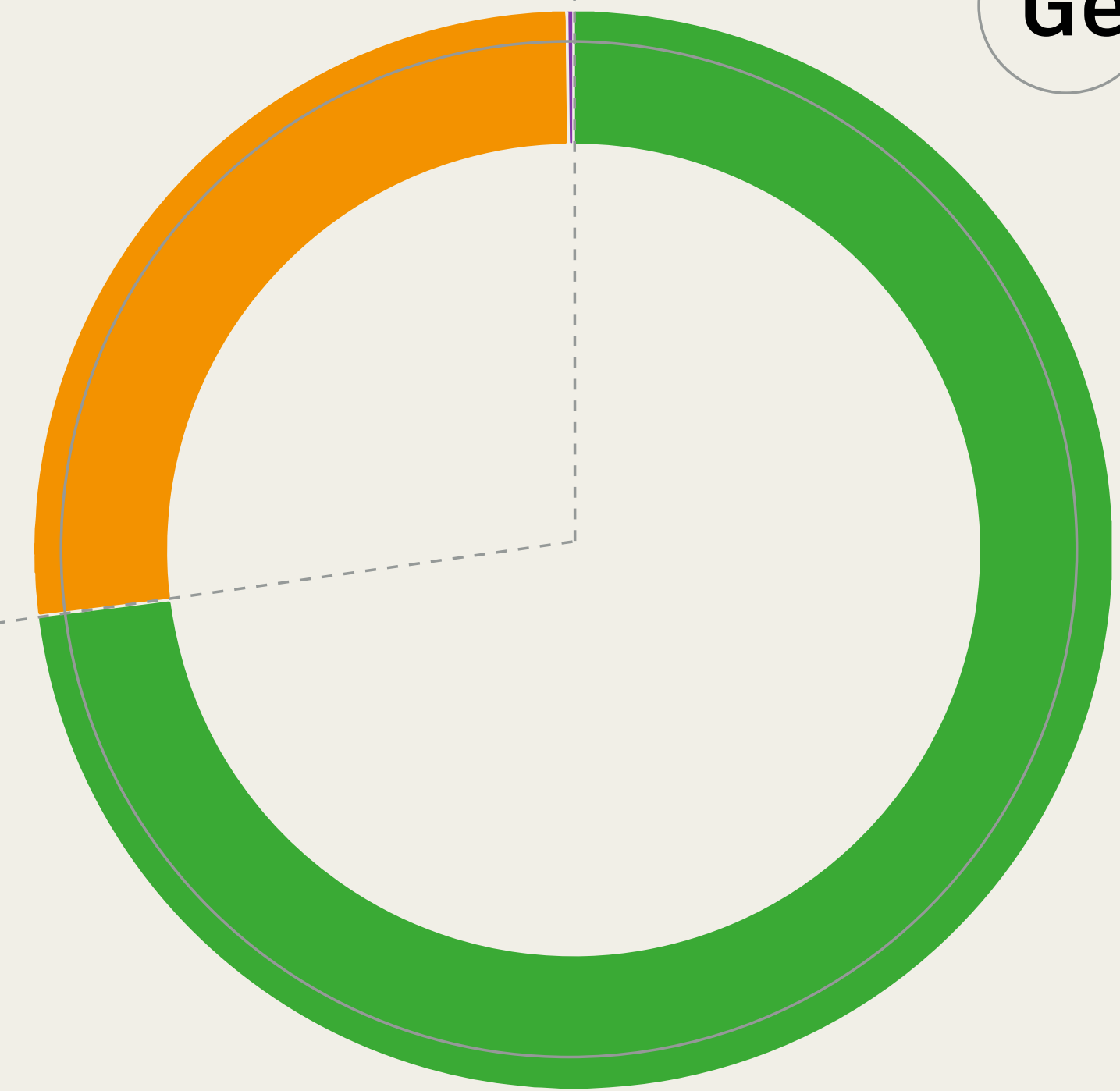
Race/Ethnicity



- WHITE, 78%
- ASIAN, 9%
- LATINX, 7%
- BLACK, 3%
- OTHER, 2%
- INDIGENOUS, .5%
- MIDDLE EAST/AFRICAN, .5%

*RESPONSE RATE = 81%

Gender

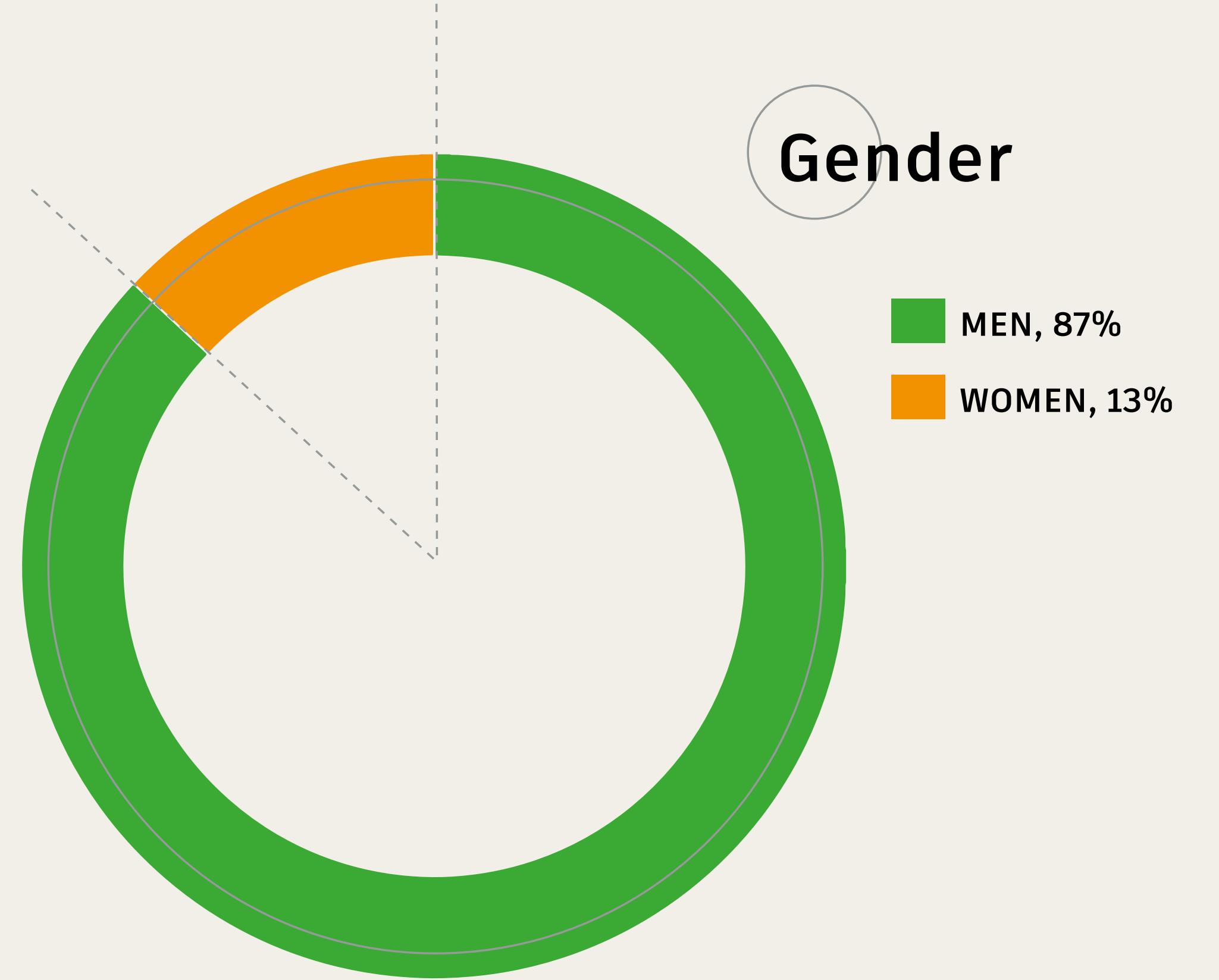
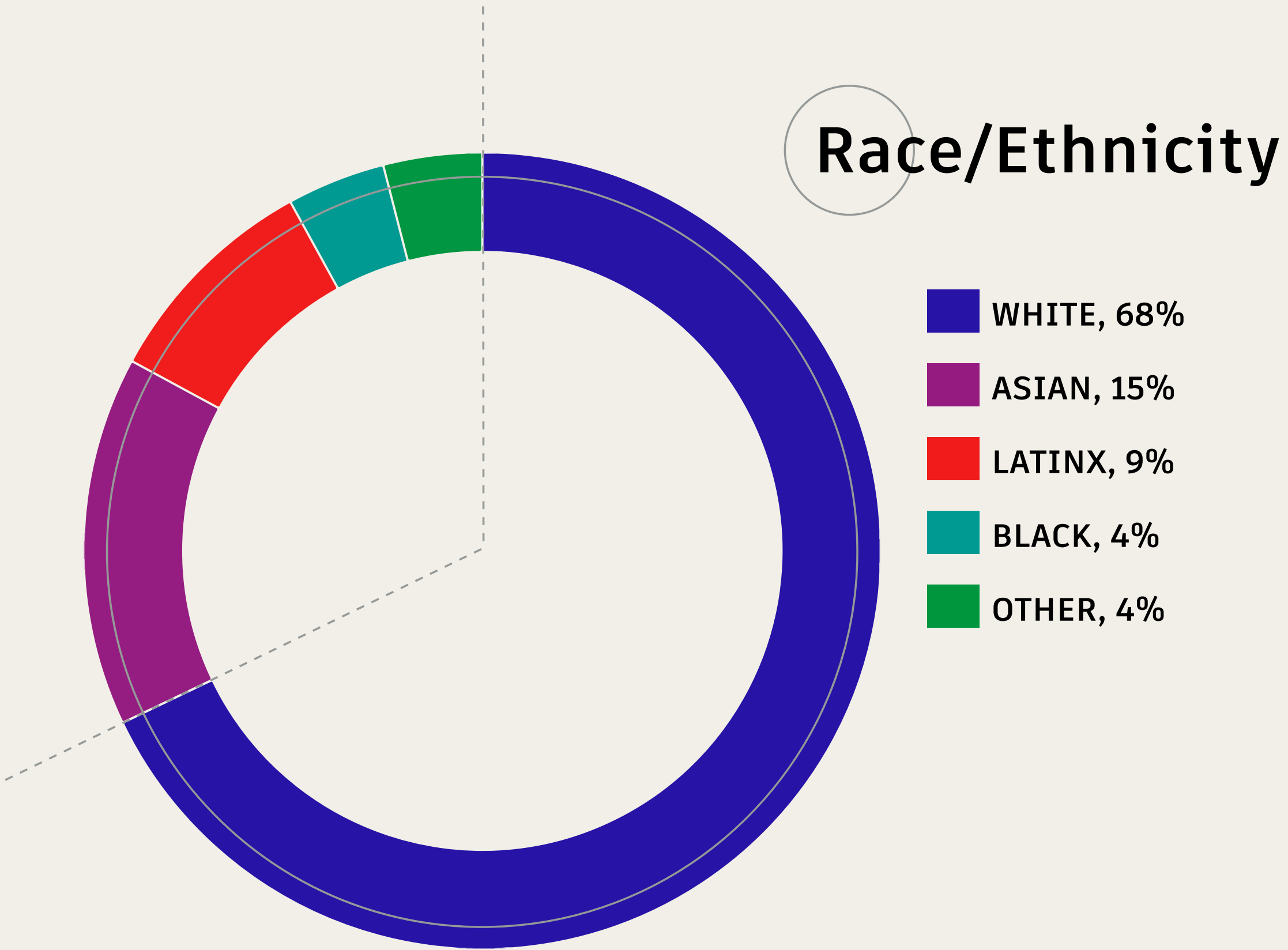


- MEN, 73%
- WOMEN, 26%
- NON-BINARY, .2%



Architecture Demographics

American Institute of Architects, National Council of Architectural Registration Boards



Engineering Demographics

Bureau of Labor Statistics, National Center for Science and Engineering Statistics

the NATIONAL ORGANIZATION of MINORITY ARCHITECTS



NOMA's mission, rooted in a rich legacy of activism, is to empower our local chapters and membership to foster justice and equity in communities of color through outreach, community advocacy, professional development and design excellence.

Northeast Region

State	Official Chapter Name
Connecticut	NOMAct
District of Columbia	DC NOMA
Maryland	BMoreNOMA
Massachusetts	BosNOMA
New Jersey	NJ NOMA
New York	NYCOBA NOMA
Pennsylvania	PGH NOMA
Pennsylvania	PhilaNOMA

[Diversify Architecture]

[Diversify Architecture] is transforming the profession that designs our world - inspiring and supporting BIPOC Architects and designers so that the future of our communities belongs to everyone.

diversifyarchitecture.com



First 500 aims to inspire Black women and girls to infinitely increase our licensed representation in the industry to better reflect the environments we serve.

first500.org



National Society of Black Engineer's

Mission: To increase the number of culturally responsible Black Engineers who excel academically, succeed professionally and positively impact the community.

nsbe.org

Society of Hispanic Professional Engineer's

Mission: SHPE changes lives by empowering the Hispanic community to realize its fullest potential and to impact the world through STEM awareness, access, support, and development.

shpe.org



Mission:

To inspire youth to imagine the beauty they want to see in the world, and to provide a platform to project their vision and voice to the broader community.

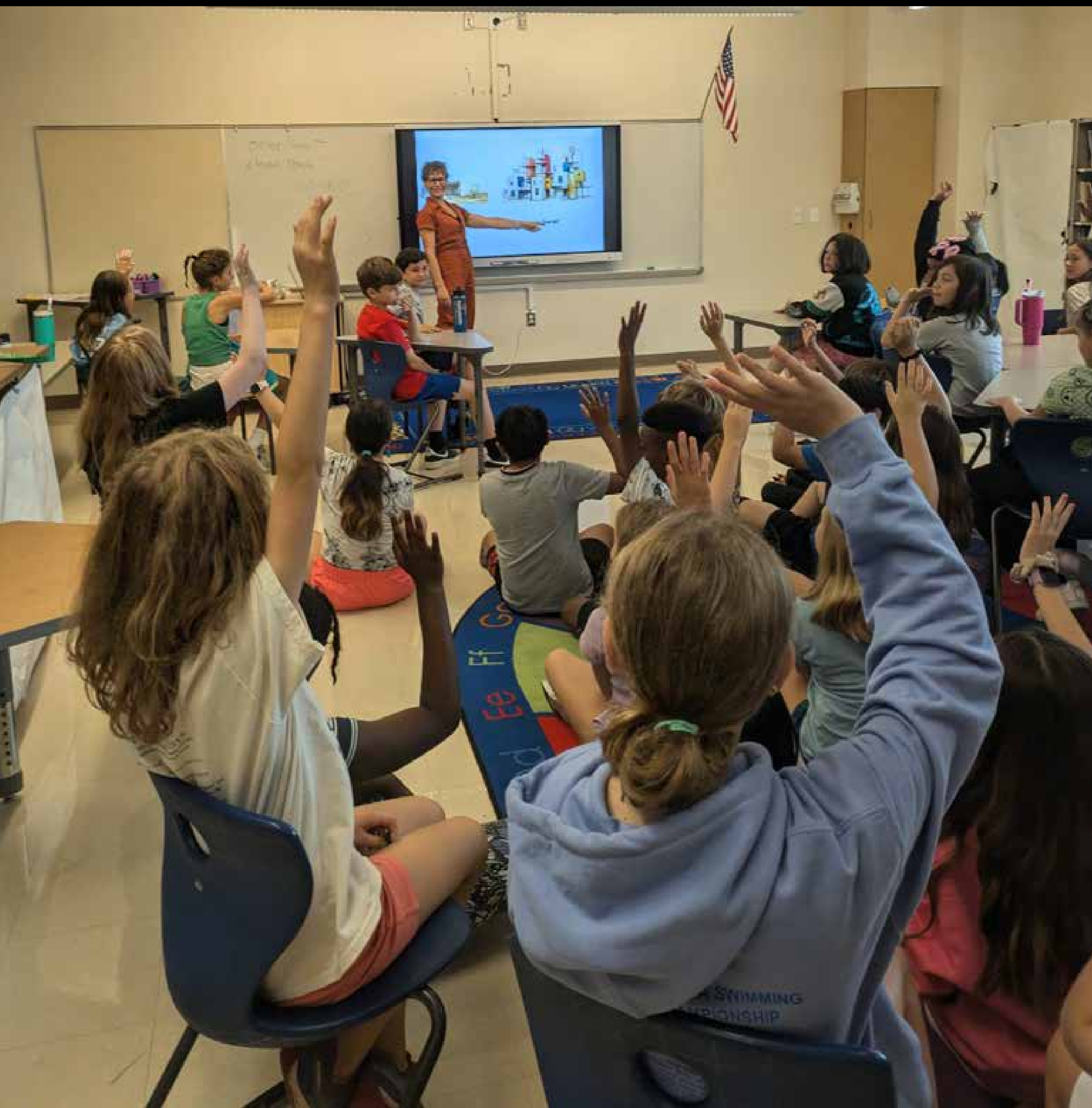
Discover

12

Beliero















Toain Oshinowo



ARCHITECTURAL RENDERING





+

LEGOS

Cris, Ewie, Alier, Saka

& IMAGINARY ARCHITECTURE

Where does your structure exist? [the jungle, Mars, underground, in the clouds...]

on the beach

What is the function of your structure? [Is it a house? Is it a community center? An ice cream shop?]

ice cream shop

Describe some special features of your structure.

Coral seating outside, coral statues, seating, cute window to order from, fun different structure shape

What kind of architecture do you like? [Futuristic, Modern, Traditional, Ornate, Biophilic]

traditional, modern, (fun)





LEMONTE
21

KALOUR

GA 1 or 2 PLAYERS STEM

PRIVATE

Prints

Annual Report

Informe anual



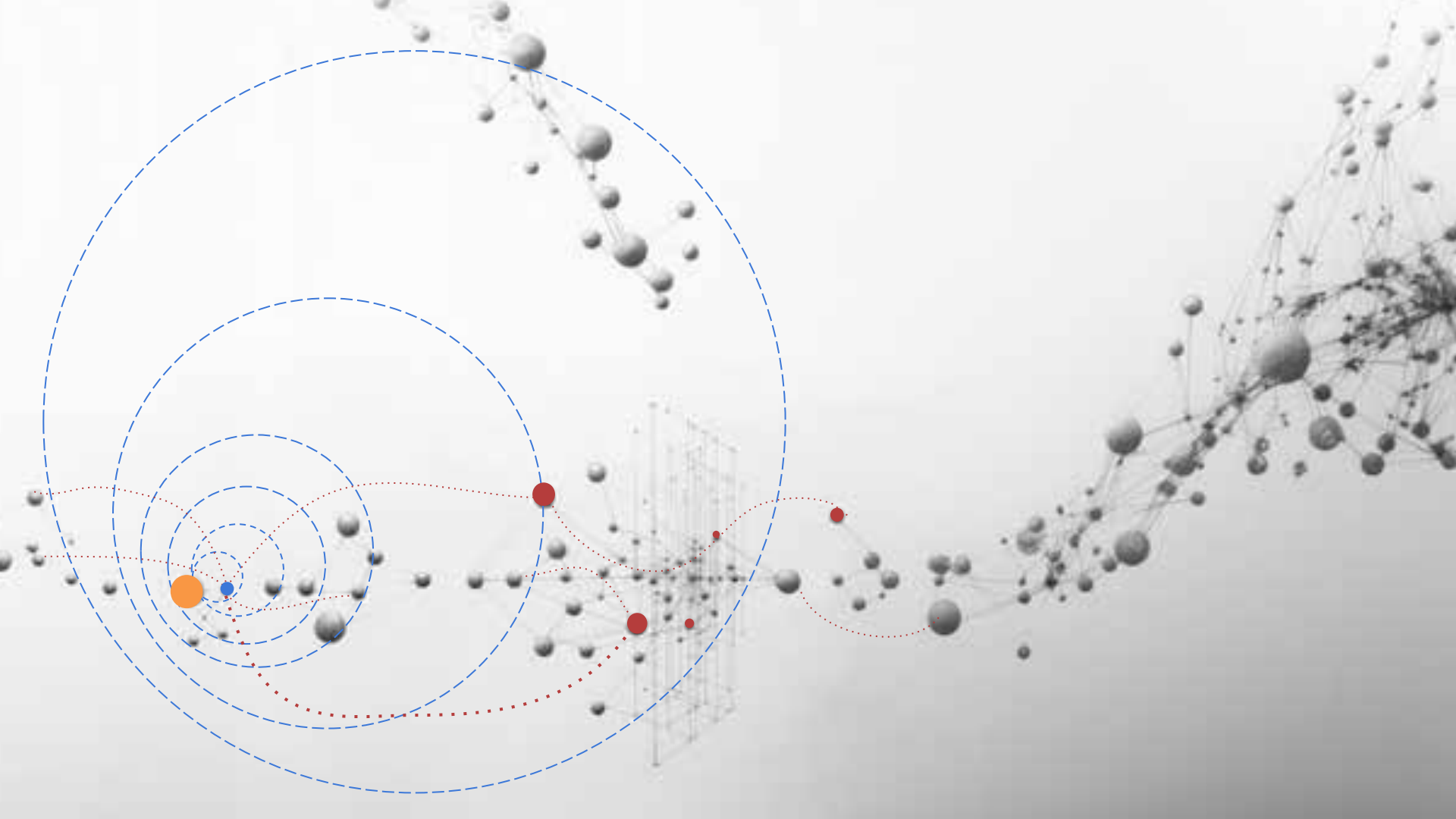














Vermont Council on Rural Development

Unleashing the power of Vermonters to create a better future

What are the ways to engage?





Inform

- provide balanced information to help the public understand

Consult

- solicit public comment on an issue or decision

Involve

- work directly with the public throughout the effort, to ensure their ideas are understood and respected

Collaborate

- partner with the community in developing alternatives and choosing actions

Empower

- the final decision is up to the community and the community owns the project or initiative

Inform

Possible Tools:

- Flyers
- Newsletters
- Website
- Panel discussion
- Tabling at community events
- Open houses . . .



Consult

Possible Tools:

- Surveys (paper and online)
- Focus groups
- Facilitated meetings designed for public comment. . .



The image shows a screenshot of an online survey form titled "Your ideas for Johnson". The form includes a header with the title and a progress indicator. Below the header, there is a question: "What are your ideas about the future of Johnson's services, programs and quality of life?". The form has several input fields for text, a "Next" button, and a "Print/Share" section. The background of the slide is a faded image of a woman presenting to a group of people in a large room with arched windows.



Involve

Possible Tools:

- Visioning exercises
- Deliberate forums with small group discussions. . .



Collaborate

Possible Tools:

- Advisory committees
- Participatory decision making
- Consensus meetings



Empower

Possible Tools:

- Town Meeting
- Ballot voting
- Dot voting
- Sign ups to advance projects
- Community led task forces



Accessibility + Building Community Connections



Accessibility + Building Community Connections

- 
- A photograph of a community gathering. Several people are seated at white folding tables in a bright, open space with large windows. They appear to be in conversation. The background shows a colorful banner and more people. The overall atmosphere is casual and community-oriented.
- Plain language
 - Transparent process
 - Child care
 - Food
 - Time of day
 - Transportation
 - Stipends
 - Focus groups
 - Direct invitations
 - Broad invitations
 - Yard signs
 - Mailings
 - Flyers
 - Banner



Photo by University of Vermont's Spatial Analysis Lab



**Re-Imagine
Johnson**

Share flood
recovery
ideas, identify
priorities,
take action

July 22
Sept 10
Oct 9

ALL are Welcome!

Learn More: bit.ly/Re-ImagineJohnson





Empower the Community

Assets, Challenges, Ideas for Action



Prioritization and Discussion



Resource Connection





**MONTGOMERY
THRIVES**

Community Visit

Report and Action Plan – January 2019



Montgomery Thrives logo photo courtesy of [unreadable]

Produced by the Vermont Council on Rural Development
in partnership with the Vermont Community Foundation





Design for the
Common Good



DURHAM YOUTH DESIGN PRISM PROJECT

DURHAM

OUTREACH

LISTENING

PROJECT

Jamyle Kenyi Kianna Noah Pilar Samantha
Dayanara Stella
Abby Leilah
Marina Chelsea
Purvij Germane
Sophiat Heather

prism
DESIGN LAB



OFFICE ON YOUTH
City Manager
CITY OF DURHAM



TRUST

Kindness

Love

Community

the group

People that
look like me.

FREEDOM TO CREATE
ENCOURAGEMENT TO
MAKE MISTAKES + LEARN

be able to talk about
things that bring me
joy without being
judged

Familiar
people

Curiosity

happiness

achievement

Inspiration

Love

Important

Those in
other groups

Support
and respect
within the place

Freedom







SITE 1 806 S. Graham

- quiet, but slow road on one side
- lot of green area for outside activities
- high visibility from highway
- A LOT of maintenance needed
- Less defined space, can change up if need
- a lot of fields / open space
- close to bus station + bus spots
- Close to a school (DSA) and Durham Central Park

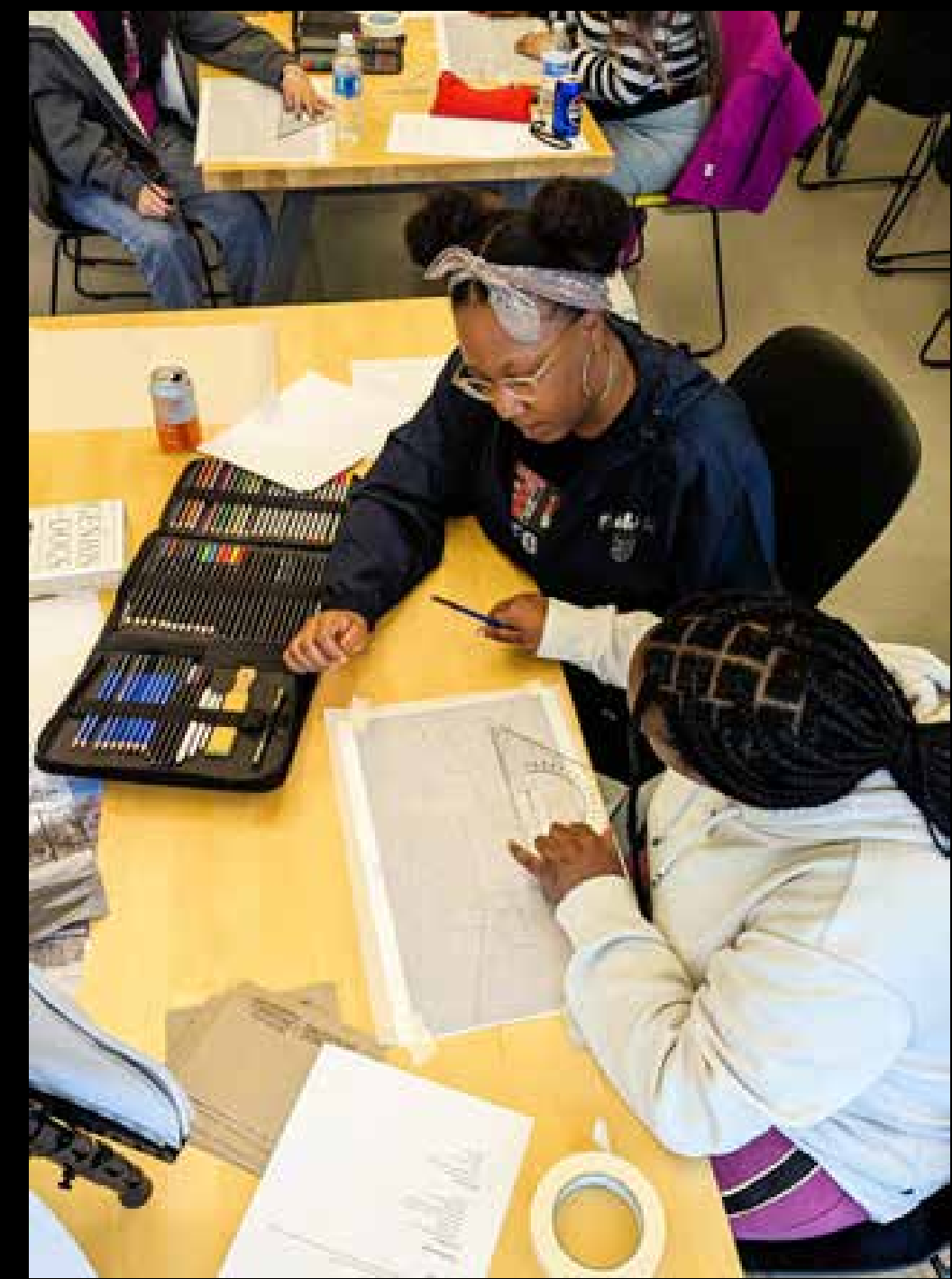
SITE 2 Chapel Hill

- squished
- proximity to bus center, Emily K Center
- more building space than exterior space (potential partner organizations?)
- church character - might slow away some, and attract others
- Hard to clean
- near groceries, schools, Duke, etc.

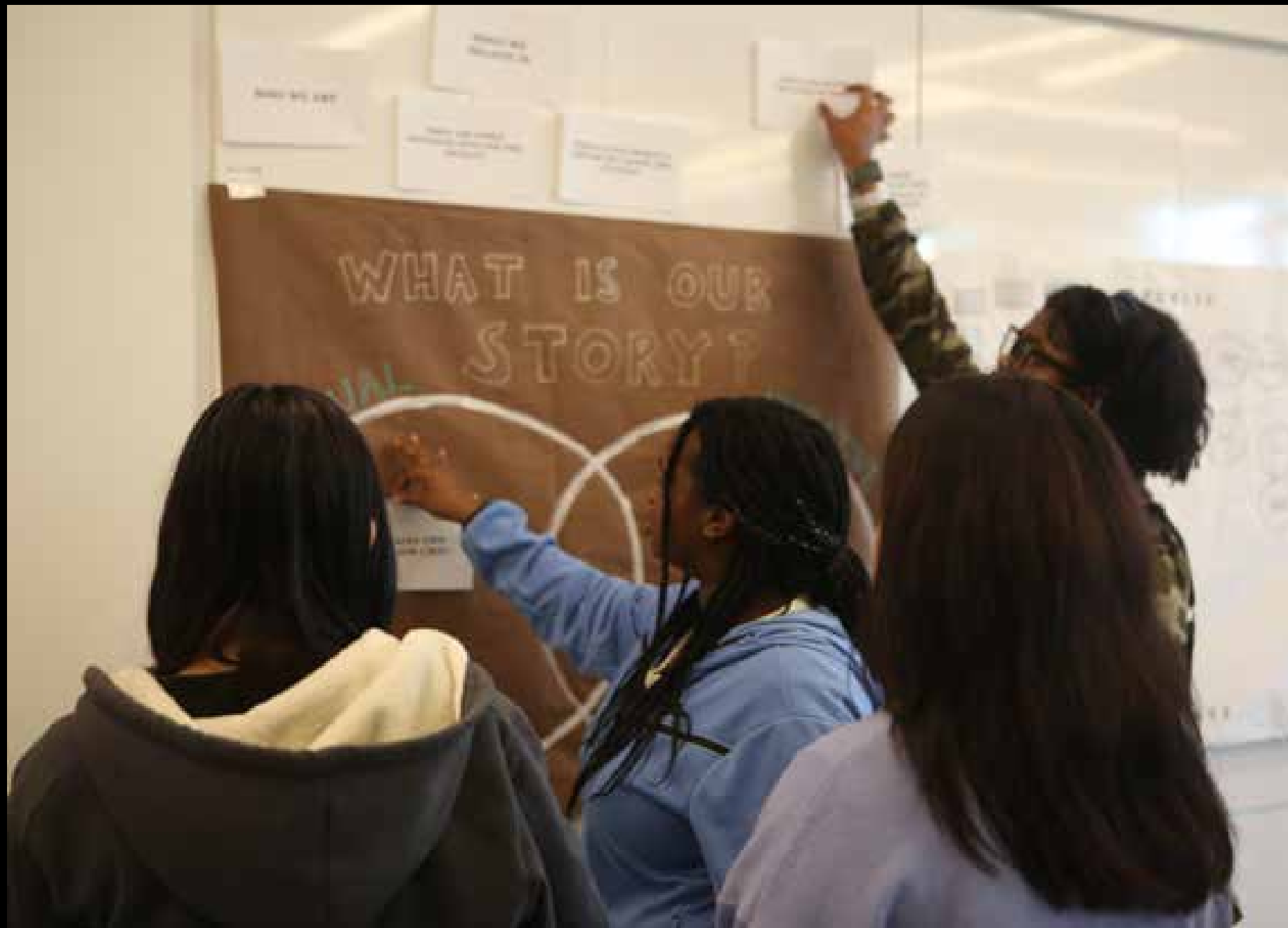
SITE 3 Club Blvd.

- best exterior spaces
- lots of windows + better window layout
- can read program from exterior
- neighborhood feel
- less traffic
- not too loud
- across from community center
- closer to lower income communities

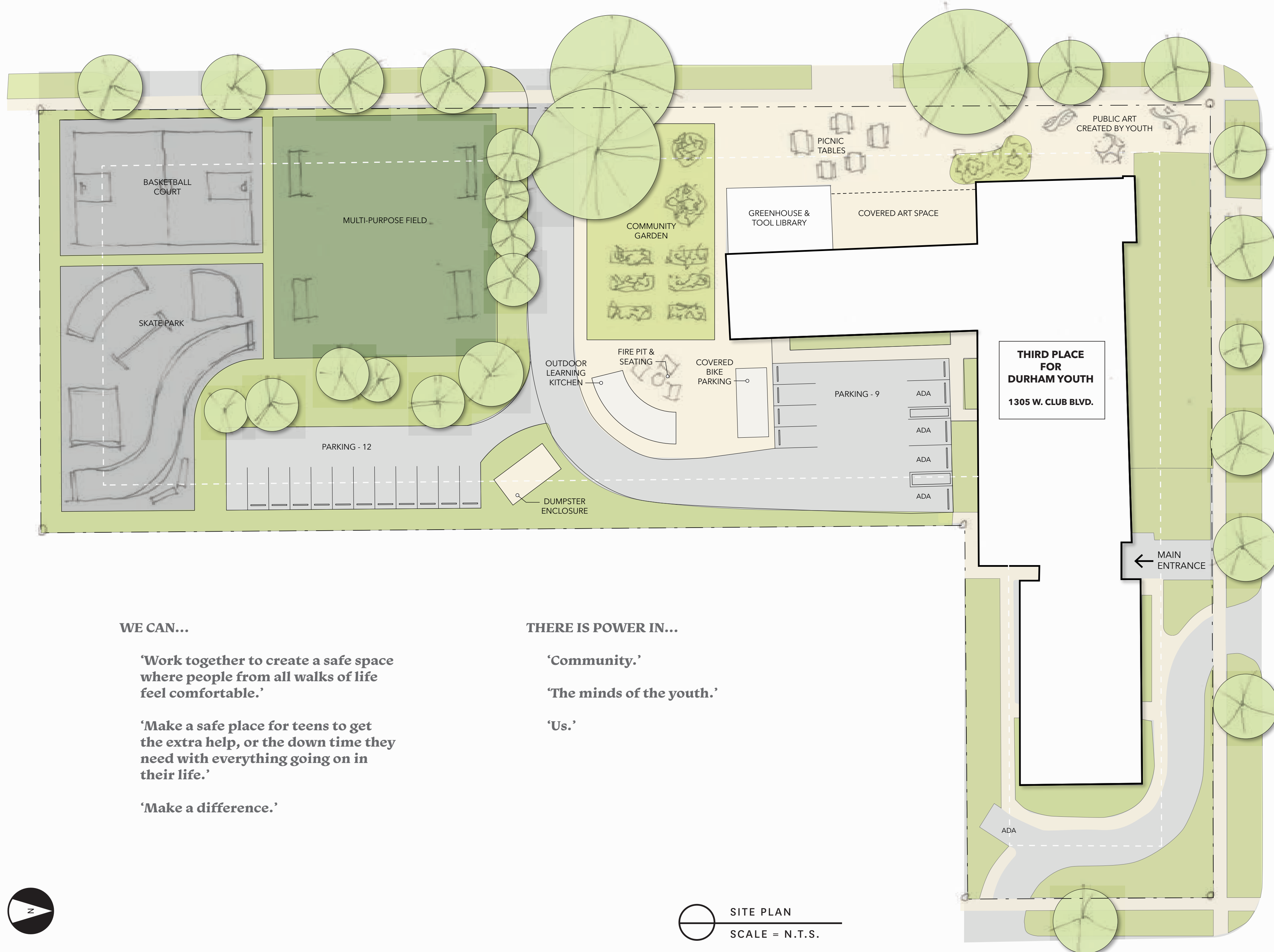












WE CAN...

'Work together to create a safe space where people from all walks of life feel comfortable.'

'Make a safe place for teens to get the extra help, or the down time they need with everything going on in their life.'

'Make a difference.'

THERE IS POWER IN...

'Community.'

'The minds of the youth.'

'Us.'



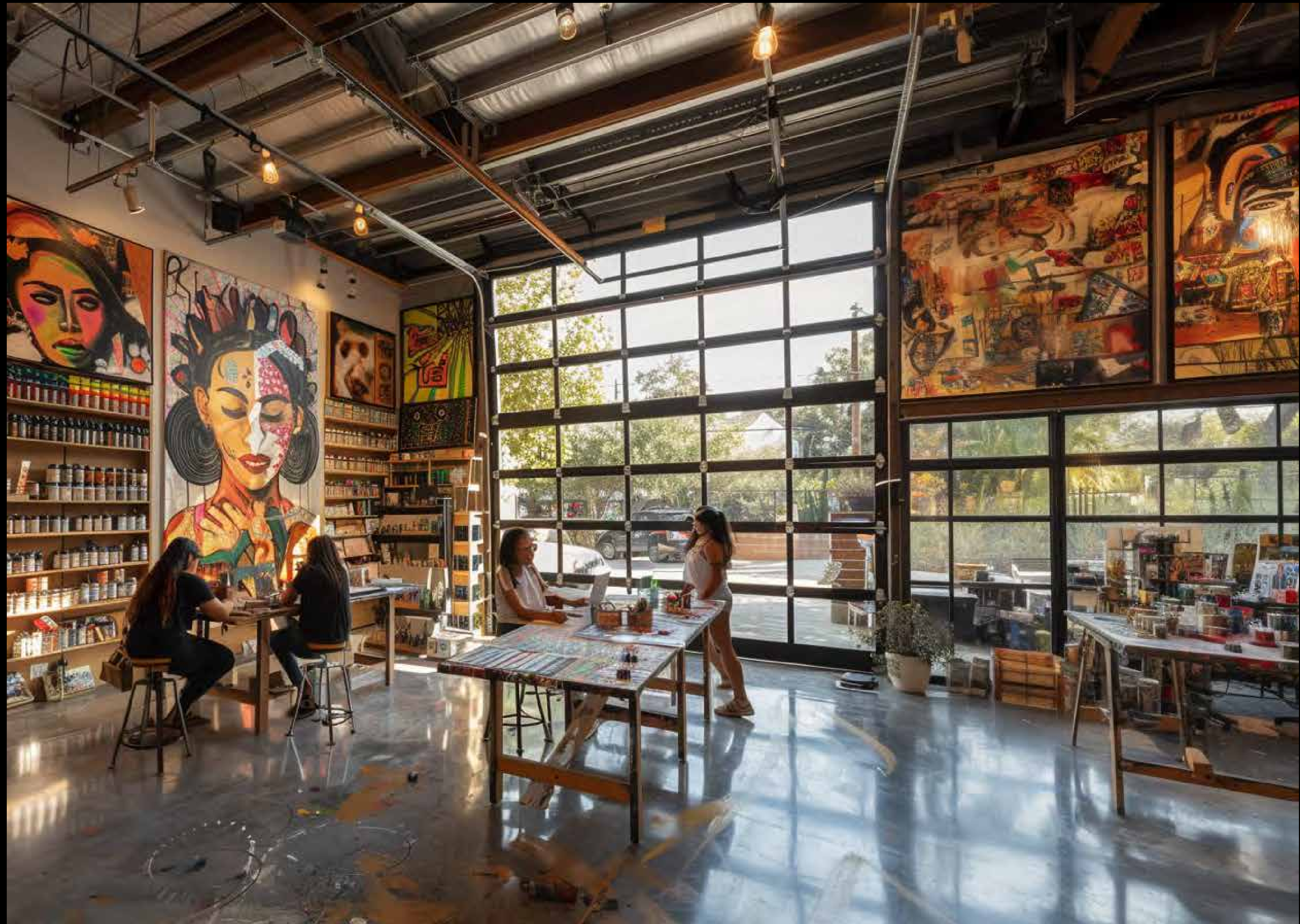
SITE PLAN
SCALE = N.T.S.



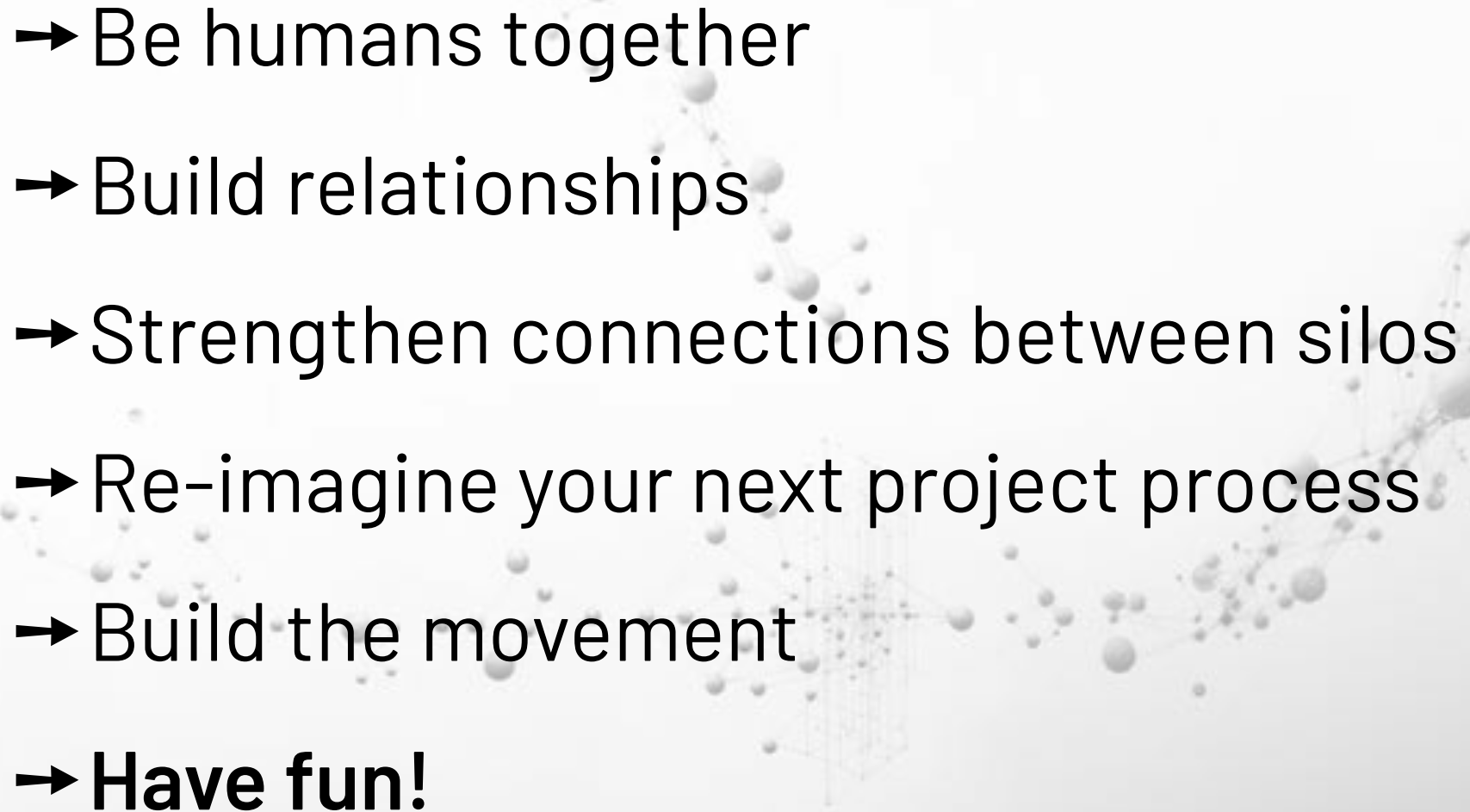










- 
- Be humans together
 - Build relationships
 - Strengthen connections between silos
 - Re-imagine your next project process
 - Build the movement
 - **Have fun!**