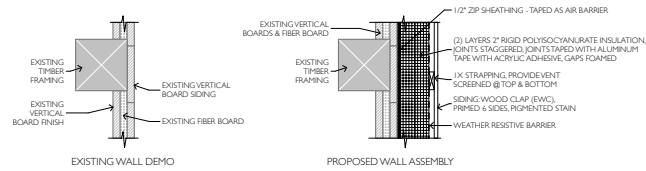
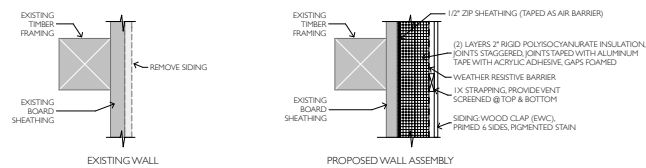


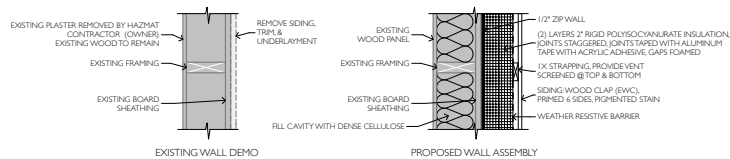
4 WALL ASSEMBLY PLAN SECTION - NEW CONSTRUCTION
SCALE: 1 1/2" = 1'-0"



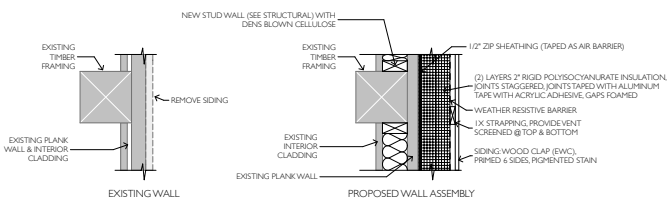
3 WALL ASSEMBLY PLAN SECTION - WEST COLLEGE ROOM
SCALE: 1 1/2" = 1'-0"



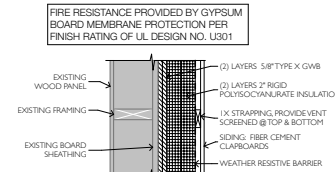
2 WALL ASSEMBLY PLAN SECTION - DODGE ROOM
SCALE: 1 1/2" = 1'-0"



1 WALL ASSEMBLY PLAN SECTION - FRONT BUILDING
SCALE: 1 1/2" = 1'-0"

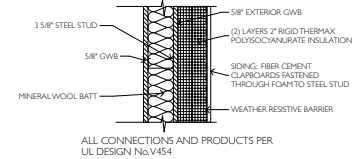


1a WALL ASSEMBLY PLAN SECTION - CLUB ROOM
SCALE: 1 1/2" = 1'-0"

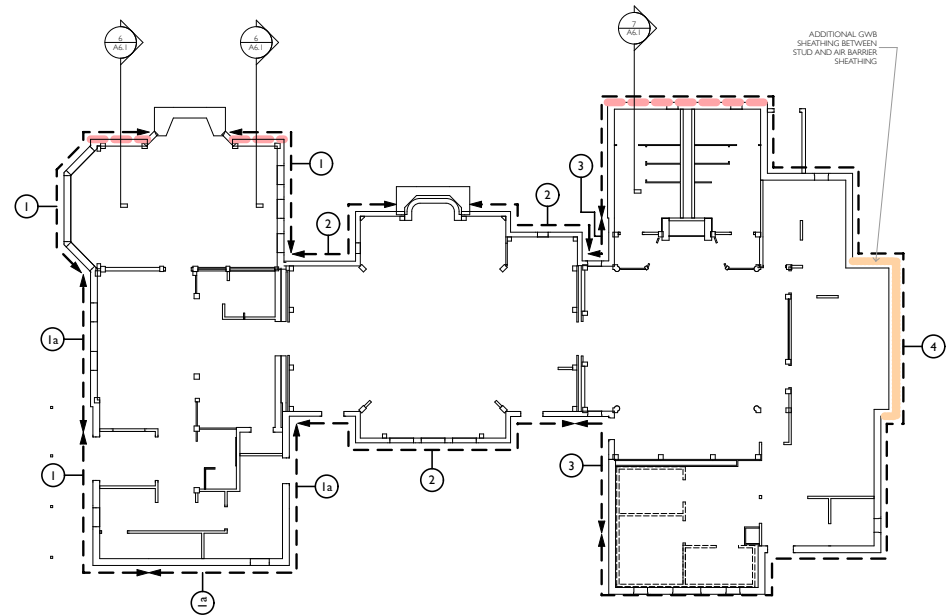


1. Nailheads — Exposed or covered with joint compound.
2. Joints — Exposed joints covered with joint compound and paper tape. Joint compound and paper tape may be omitted when square edge boards are used. As an alternate, nom 3/32 in. thick gypsum veneer plaster may be applied to the entire surface of Classified veneer baseboard with the joints reinforced with paper tape.
3. Nails — 6d cement coated nails 1-7/8 in. long, 0.0915 in. shank diam, 1/4 in. diam heads, and 8d cement coated nails 2-3/8 in. long, 0.113 in. shank diam, 9/32 in. diam heads.
4. Gypsum Board — 5/8 in. thick, two layers applied either horizontally or vertically. Inner layer attached to studs with the 1-7/8 in. long nails spaced 6 in. O.C. Outer layer attached to studs over inner layer with the 2-3/8 in. long nails spaced 8 in. O.C. Vertical joints located over studs. All joints in face layers staggered with joints in base layers. Joints of each base layer offset with joints of base layer on opposite side. When used in widths other than 48 in., gypsum board to be installed horizontally.

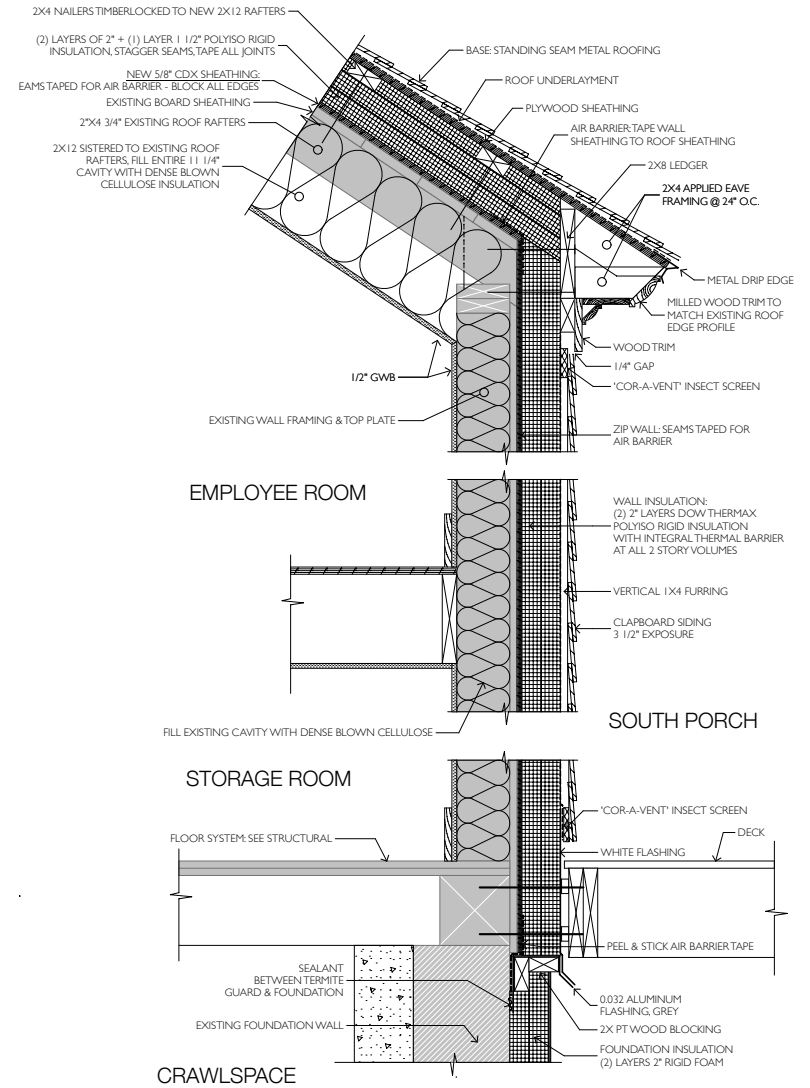
6 RATED ASSEMBLY - 1
SCALE: 1 1/2" = 1'-0"



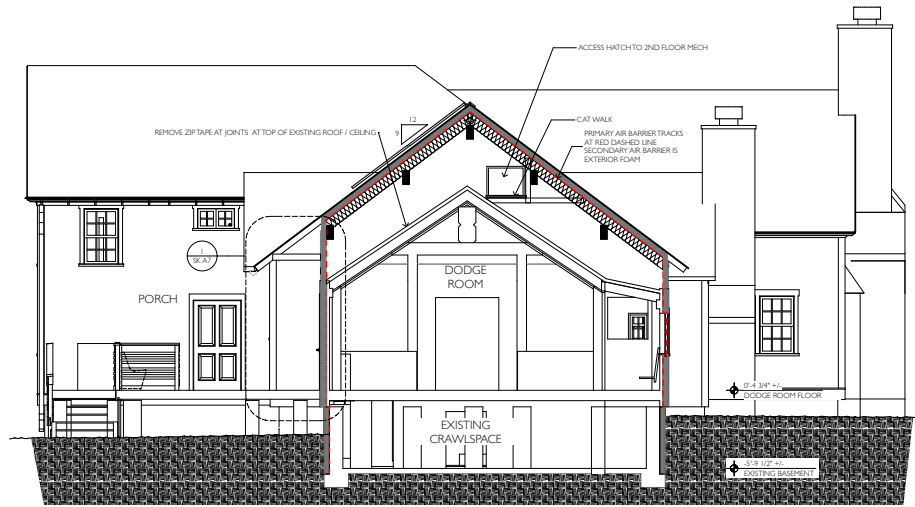
7 RATED ASSEMBLY - 2
SCALE: 1 1/2" = 1'-0"



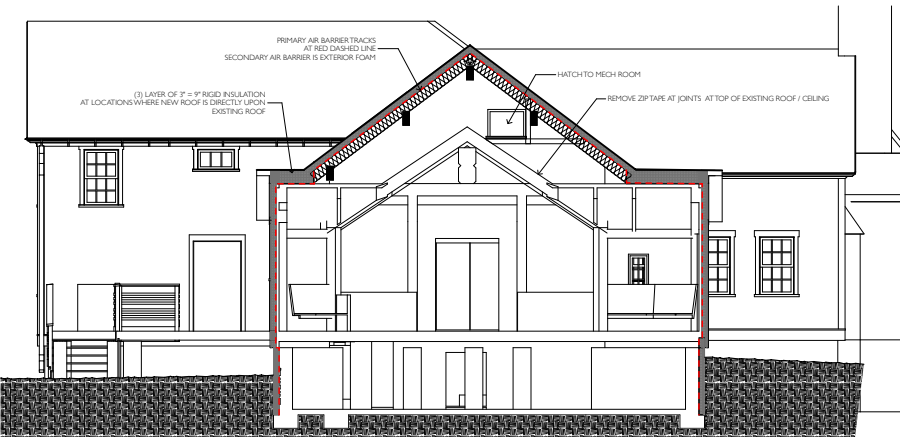
WALL ASSEMBLIES KEY PLAN



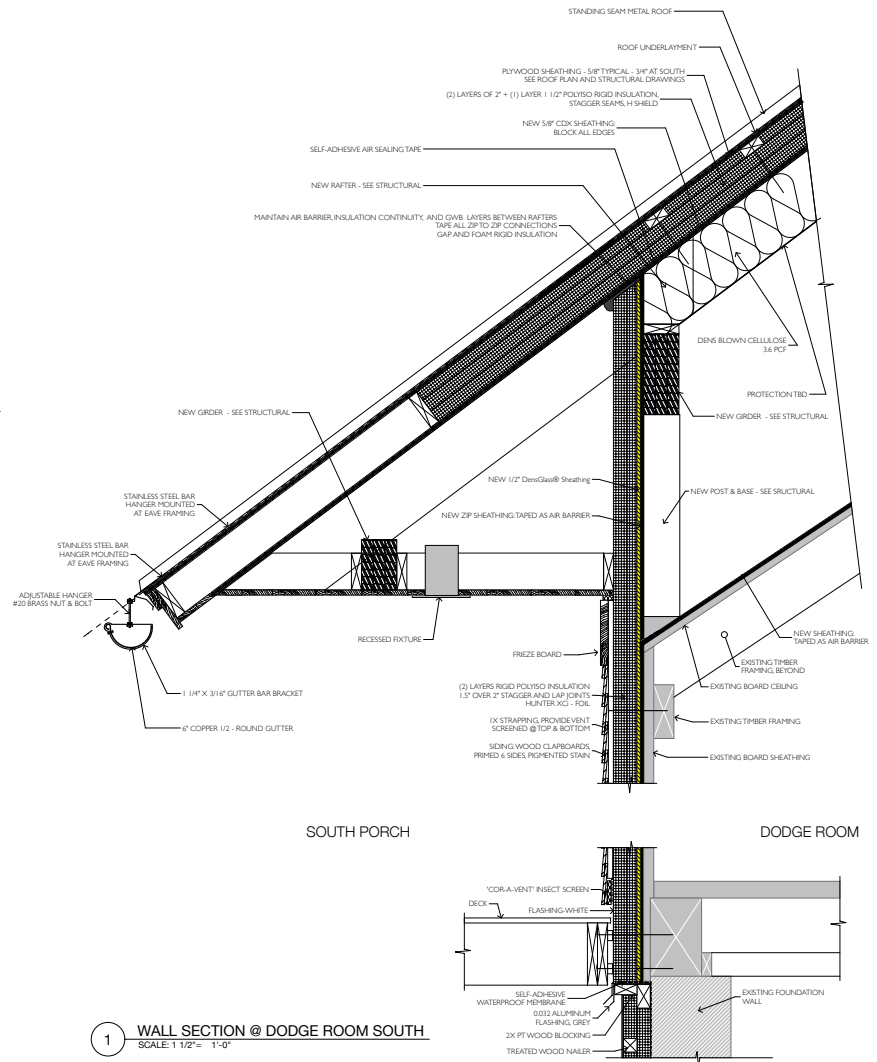
The Log – Energy & Systems – Wall Upgrade



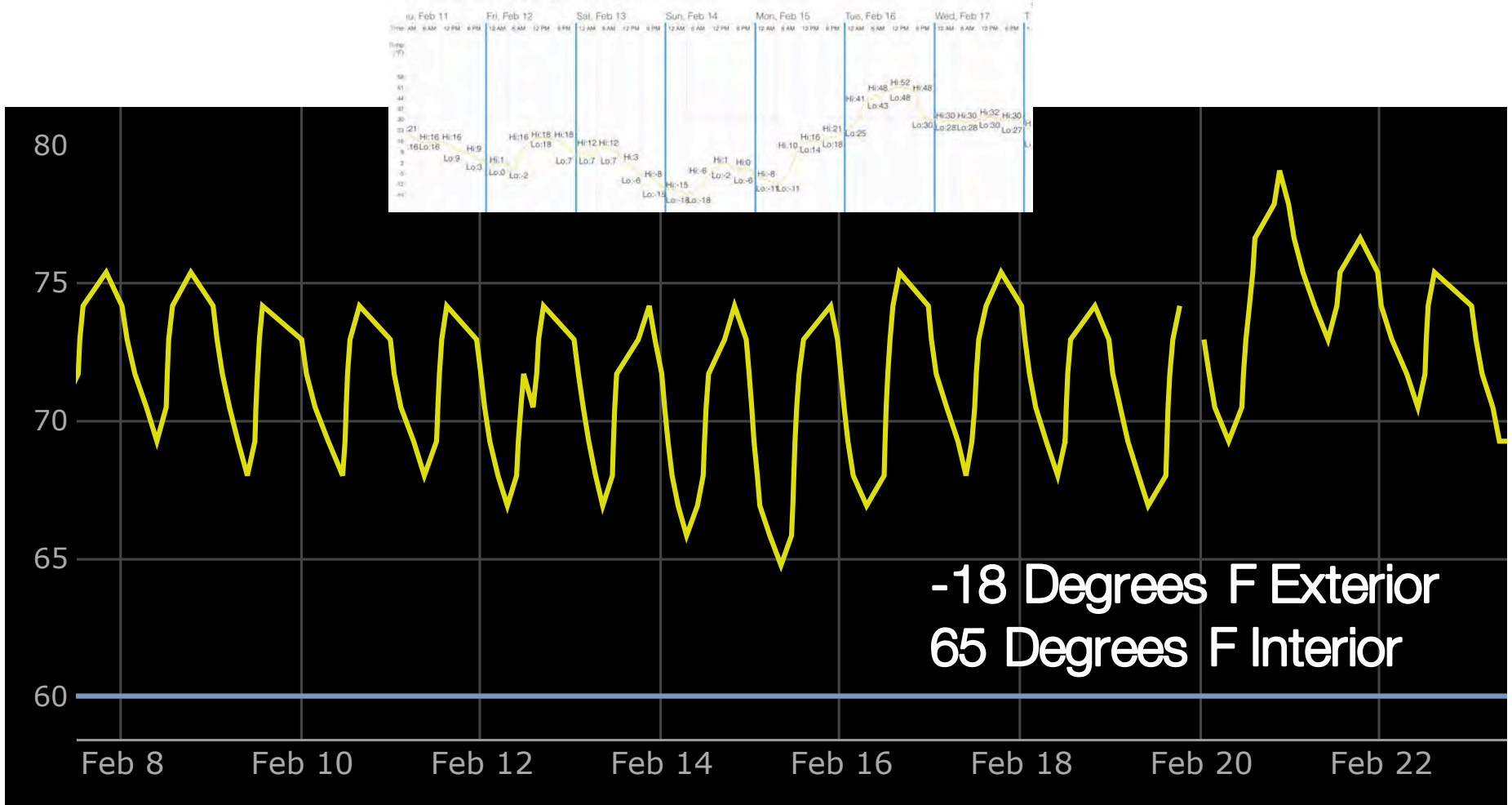
2 SECTION @ DODGE ROOM
SCALE: 1/4" = 1'-0"



3 SECTION @ DODGE ROOM-1
SCALE: 1/4" = 1'-0"



1 WALL SECTION @ DODGE ROOM SOUTH
SCALE: 1 1/2" = 1'-0"



The Log – Energy & Systems – Unconditioned Attic