

Starting Energy Use Intensity (EUI) Kbtu/sf/year	992 Mmbtu or EUI of 104
Predicted EUI	EUI of 35
Actual EUI	pending
Starting infiltration rate	.38 cfm75/sfs
Code	.40 cfm75/sfs
Resulting	.26 cfm75/sfs

The Log, Williams College

Williamstown, MA

Original Architect	Kenneth Reynolds (Marcus T. Reynolds Architects) A Carpenter
Contractor.....	Cummings General Contractor Inc.
Year built.....	1941 (1800s)
Building Area.....	7,890 sf
Construction Cost.....	\$3.7 Million

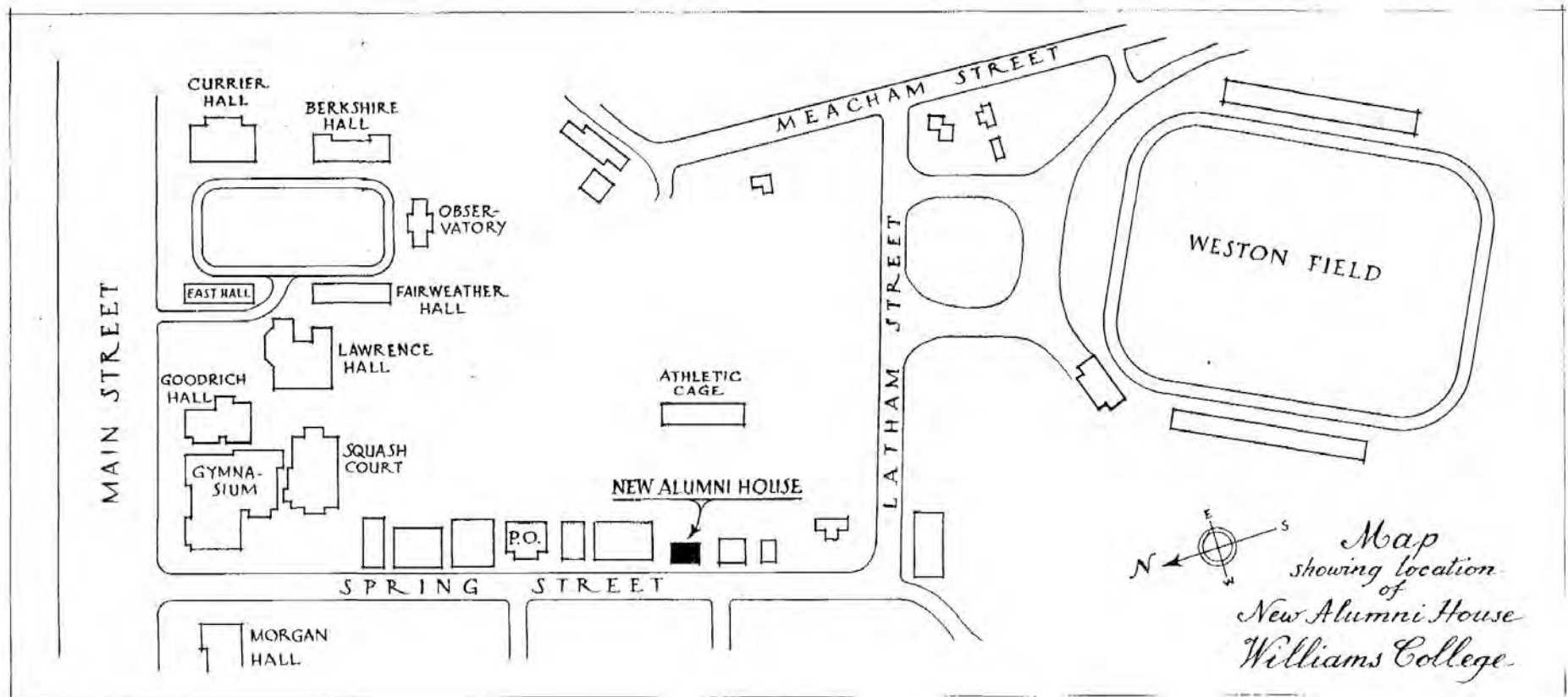
Design Team

C&H Architects	Architect of Record
Energy Balance	Systems & Envelope
B2Q Assoc.	MEP Engineering
Barry Engineering	Structural
Guntlow Assoc.	Civil Engineering
Lorin Starr Interiors	Interior Design
Crabtree & McGrath	Food Services
Conceptual Lighting	Lighting Design
MH Professional	Commissioning Agent (By Owner)

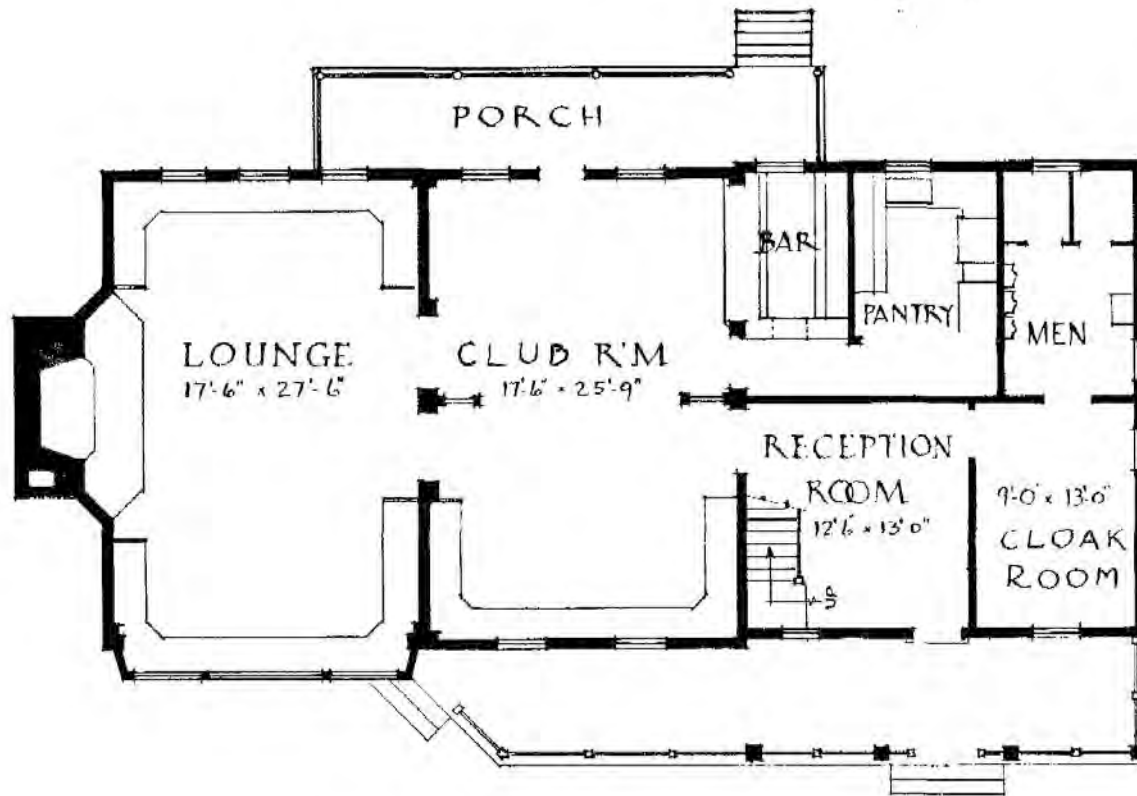
Project Goals:

- Protect and preserve the architectural integrity and historical significance of The Log.

- Make extensive deferred maintenance renovations and access upgrades.
- Add full-service restaurant & catering capacity.
- Total Systems Upgrade (MEPF - Envelope - Energy)
- Engage a diverse building committee including a strong alumnae presence.
- *Do Not Change The Log!*

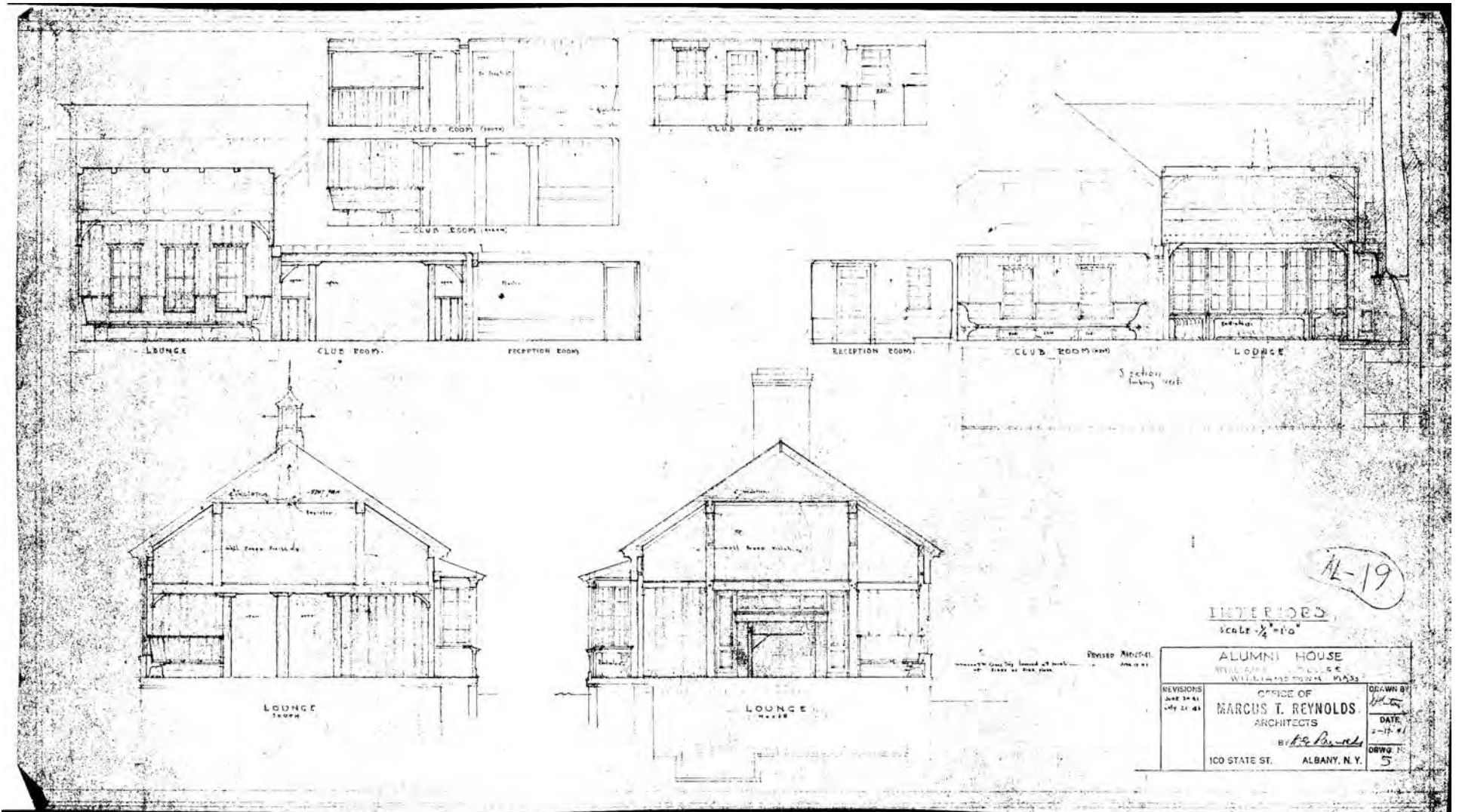


The Log – Original Drawings – 1941 Site Plan

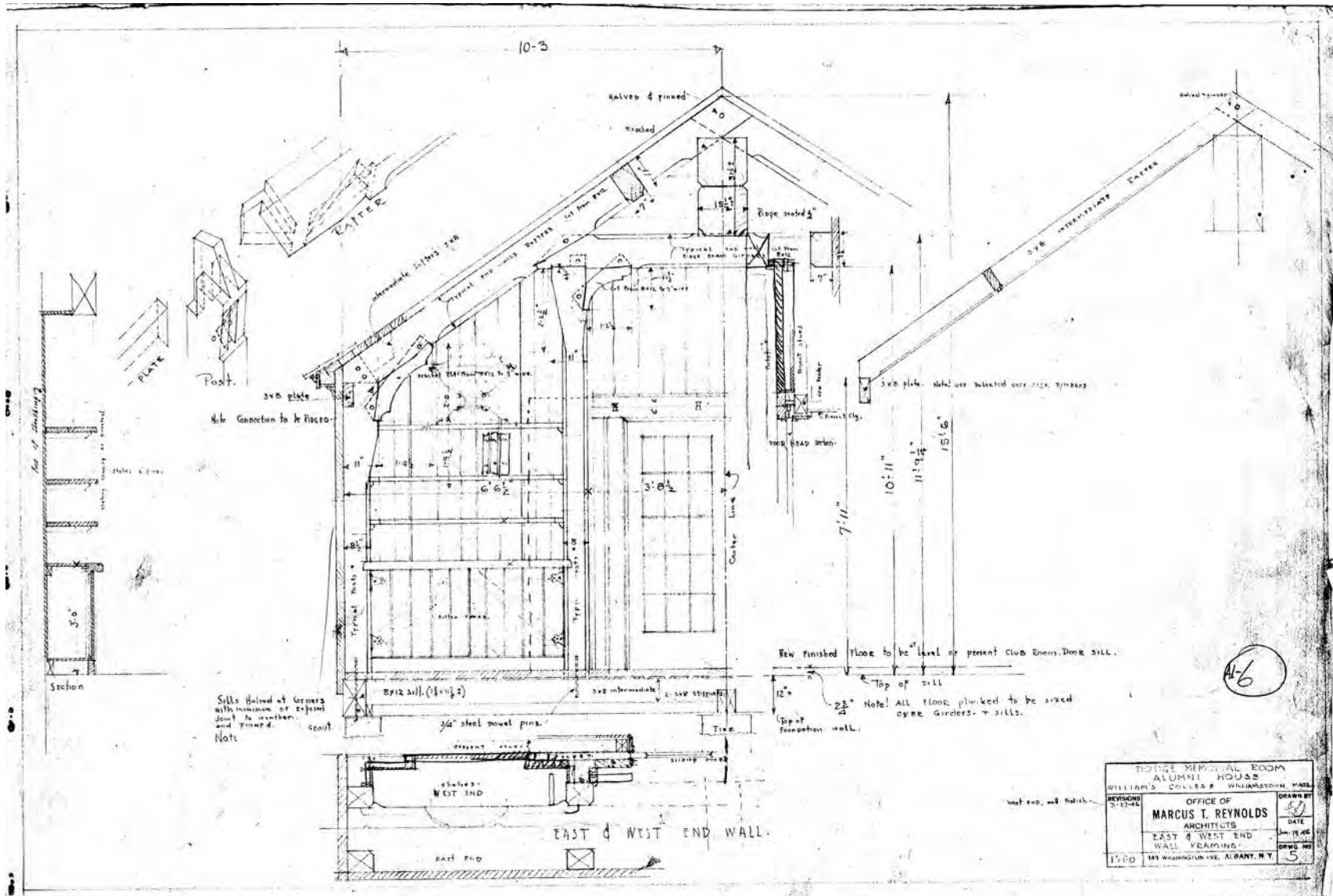


FIRST FLOOR PLAN

*Office of Marcus J. Reynolds
Architects
100 State St. Albany, N.Y.*



The Log – Original Drawings - Sections



The Log – Original Drawings – 1946 – Dodge Room Beam